

0346
12.74

1547
.76

H.M. LAND REGISTRY

TITLE NUMBER

SY498578

ORDNANCE SURVEY
PLAN REFERENCE

TQ0162, TQ0163 TQ0263

Scale
1/1250

SURREY

DIS

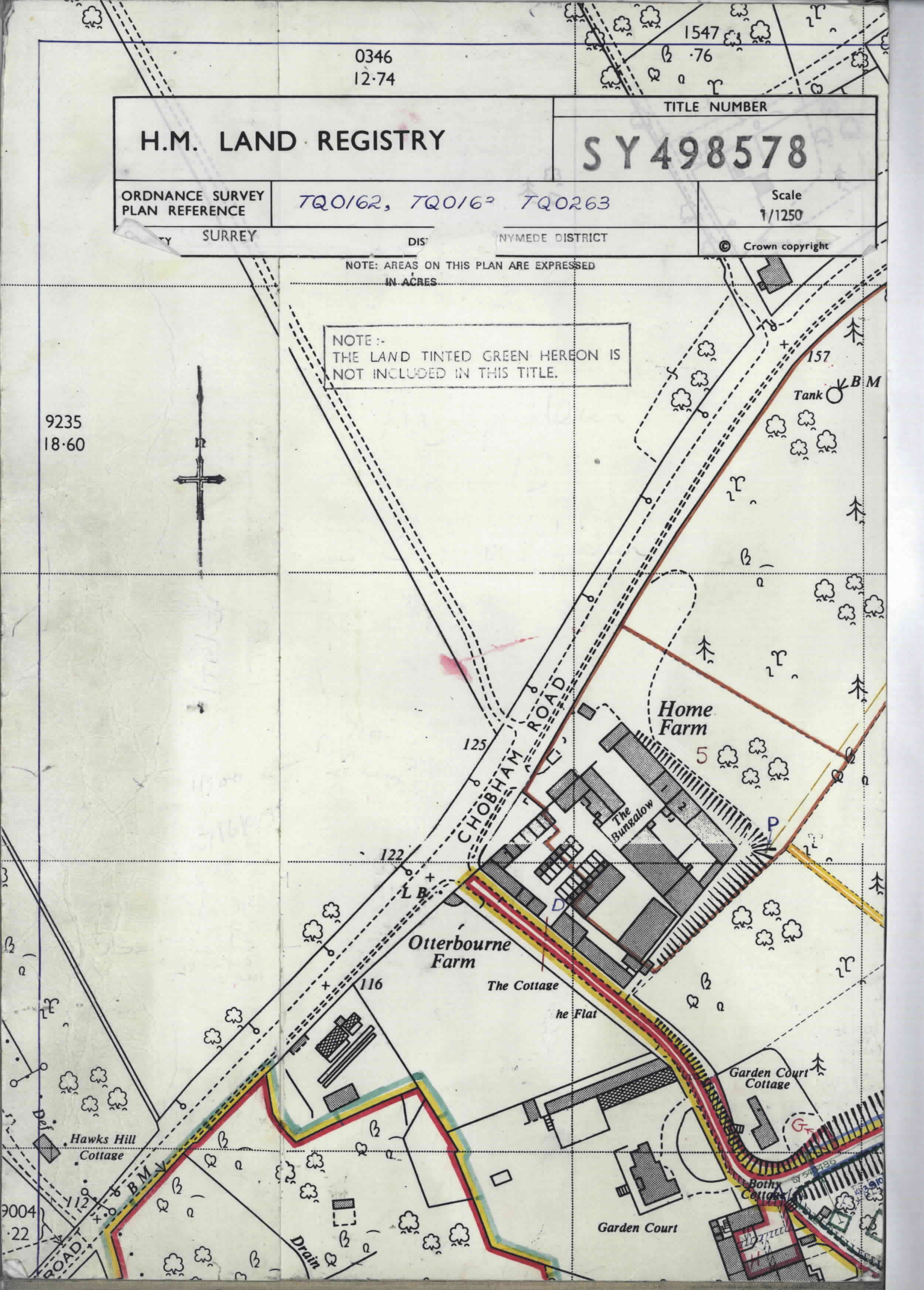
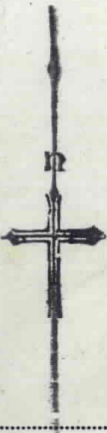
NYMEDE DISTRICT

© Crown copyright

NOTE: AREAS ON THIS PLAN ARE EXPRESSED
IN ACRES

NOTE:-
THE LAND TINTED GREEN HEREON IS
NOT INCLUDED IN THIS TITLE.

9235
18.60



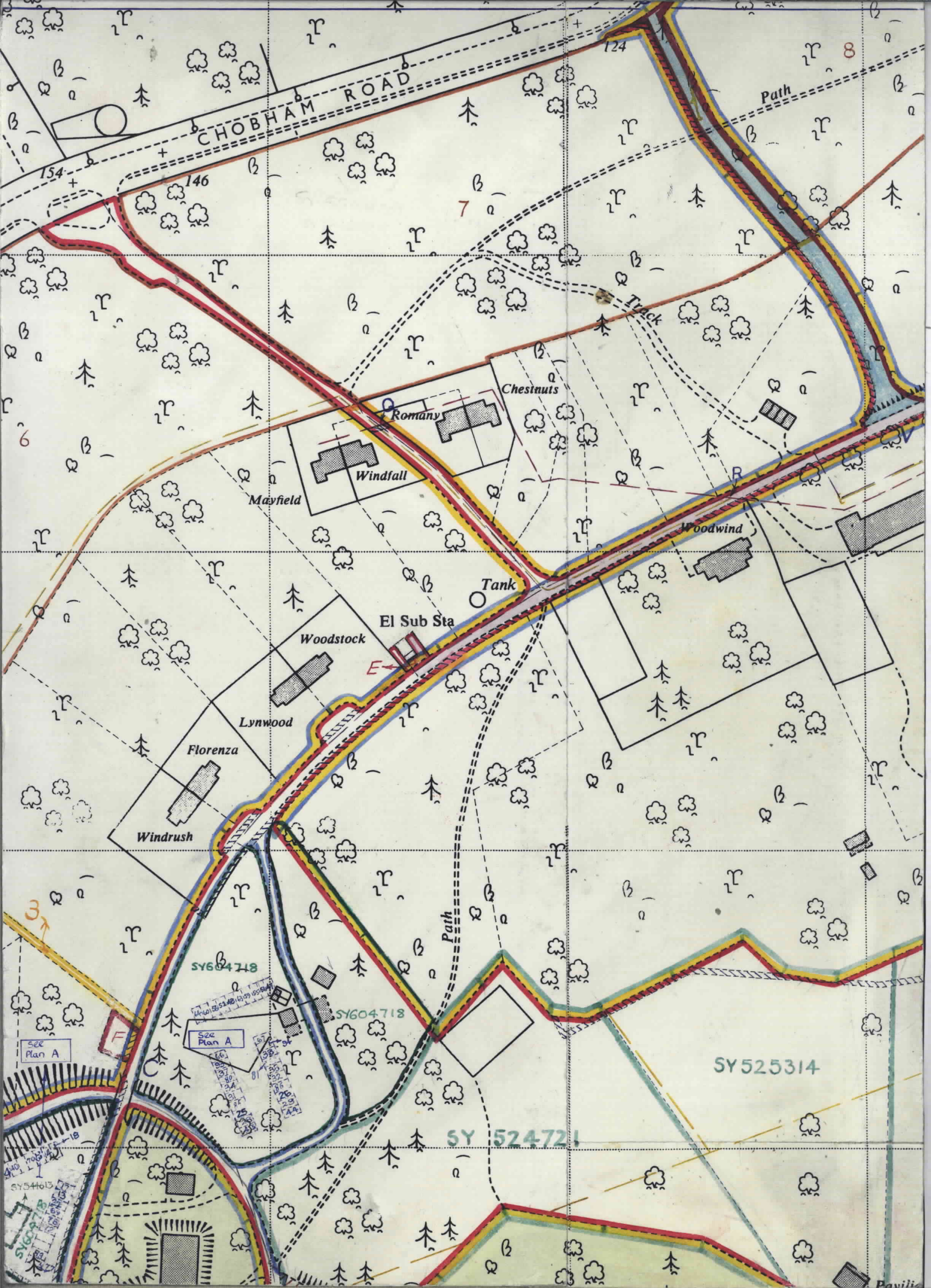
This is a copy of the title plan on 12 FEB 2015 at 19:33:11. This copy does not take account of any application made after that time even if still pending in the Land Registry when this copy was issued.

This copy is not an 'Official Copy' of the title plan. An official copy of the title plan is admissible in evidence in a court to the same extent as the original. A person is entitled to be indemnified by the registrar if he or she suffers loss by reason of a mistake in an official copy. If you want to obtain an official copy, the Land Registry web site explains how to do this.

The Land Registry endeavours to maintain high quality and scale accuracy of title plan images. The quality and accuracy of any print will depend on your printer, your computer and its print settings. This title plan shows the general position, not the exact line, of the boundaries. It may be subject to distortions in scale. Measurements scaled from this plan may not match measurements between the same points on the ground.

This title is dealt with by Land Registry, Durham Office.

© Crown Copyright. Produced by Land Registry. Further reproduction in whole or in part is prohibited without the prior written permission of Ordnance Survey. Licence Number 100026316.



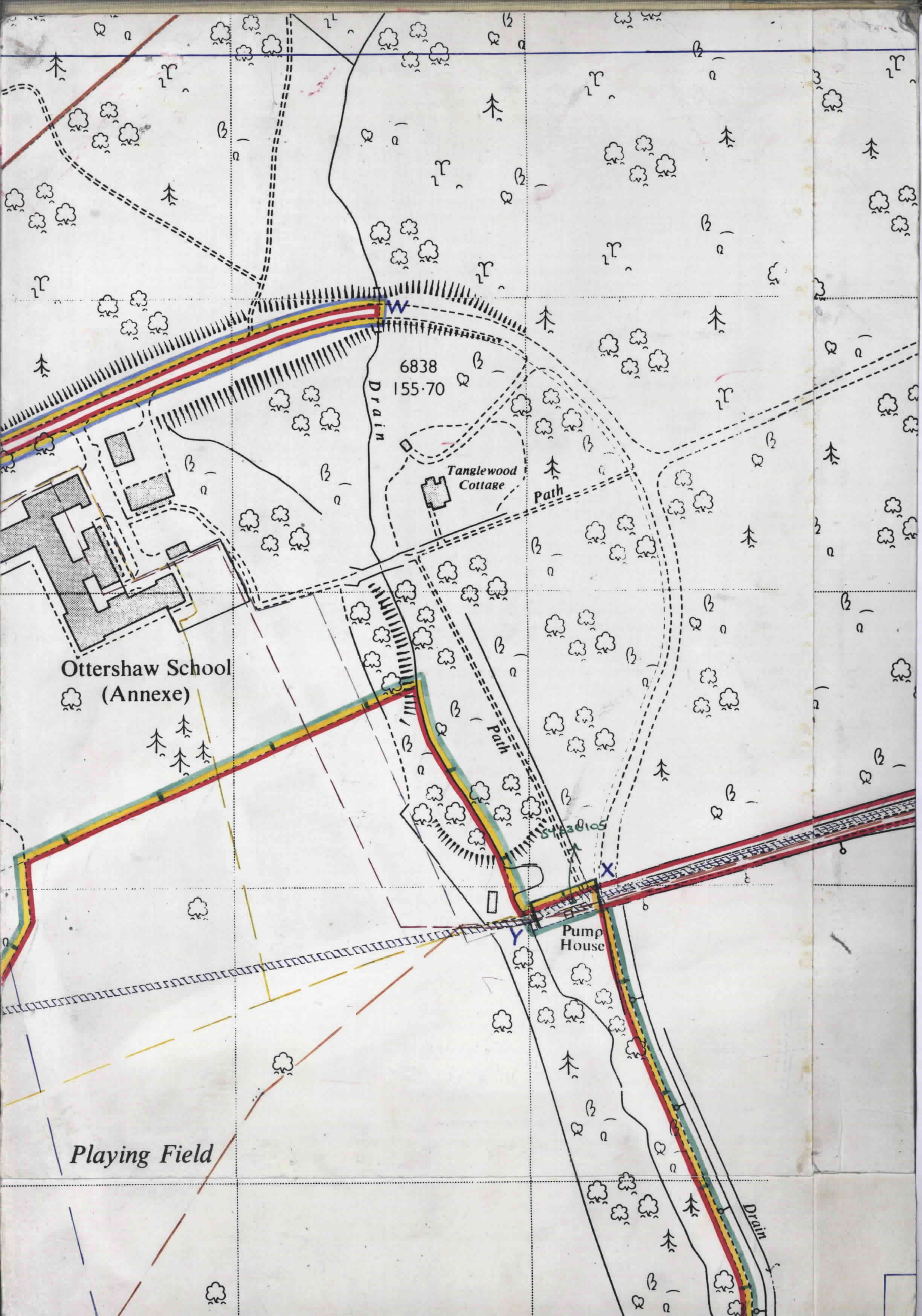
This is a copy of the title plan on 12 FEB 2015 at 19:33:11. This copy does not take account of any application made after that time even if still pending in the Land Registry when this copy was issued.

This copy is not an 'Official Copy' of the title plan. An official copy of the title plan is admissible in evidence in a court to the same extent as the original. A person is entitled to be indemnified by the registrar if he or she suffers loss by reason of a mistake in an official copy. If you want to obtain an official copy, the Land Registry web site explains how to do this.

The Land Registry endeavours to maintain high quality and scale accuracy of title plan images. The quality and accuracy of any print will depend on your printer, your computer and its print settings. This title plan shows the general position, not the exact line, of the boundaries. It may be subject to distortions in scale. Measurements scaled from this plan may not match measurements between the same points on the ground.

This title is dealt with by Land Registry, Durham Office.

© Crown Copyright. Produced by Land Registry. Further reproduction in whole or in part is prohibited without the prior written permission of Ordnance Survey. Licence Number 100026316.



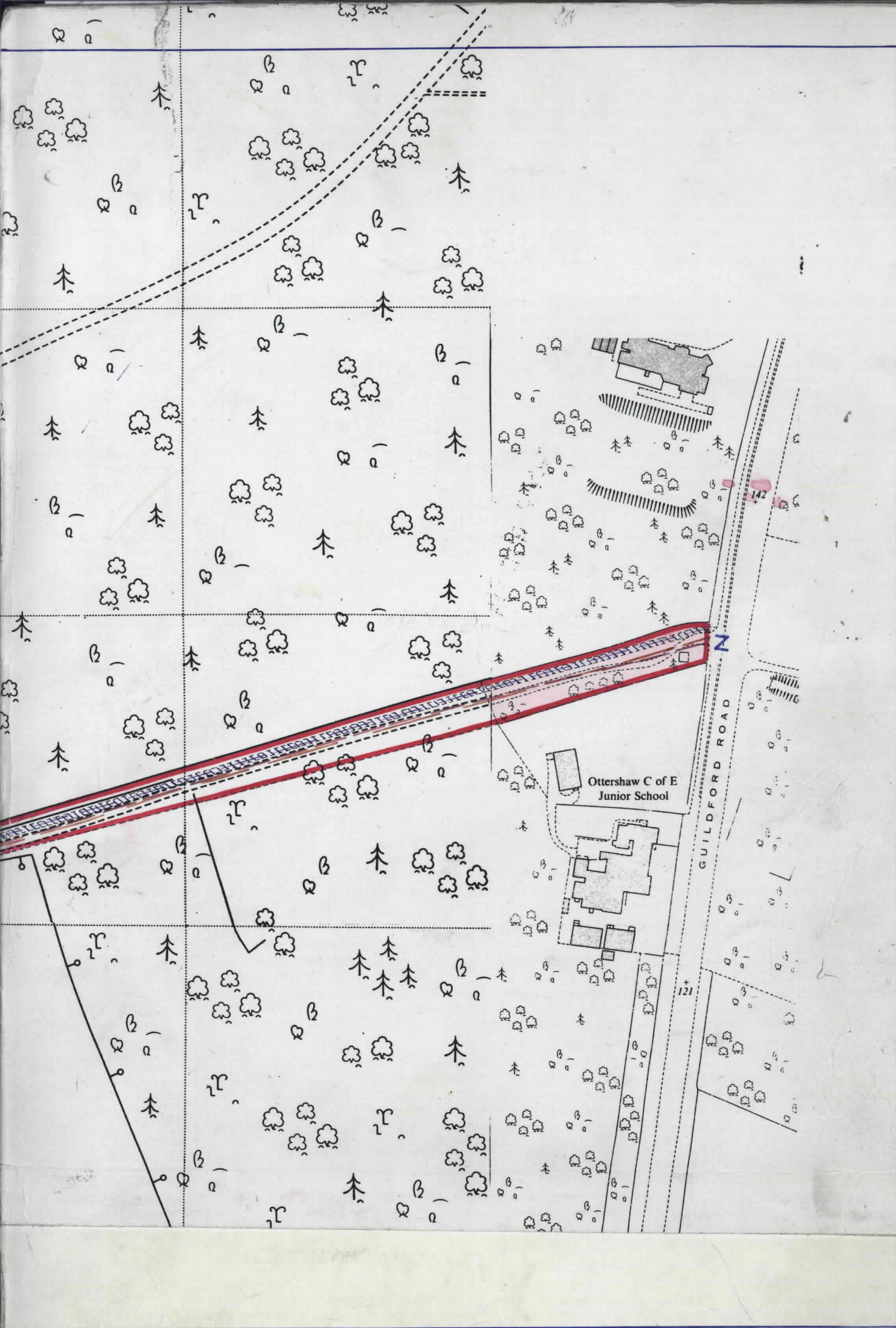
This is a copy of the title plan on 12 FEB 2015 at 19:33:11. This copy does not take account of any application made after that time even if still pending in the Land Registry when this copy was issued.

This copy is not an 'Official Copy' of the title plan. An official copy of the title plan is admissible in evidence in a court to the same extent as the original. A person is entitled to be indemnified by the registrar if he or she suffers loss by reason of a mistake in an official copy. If you want to obtain an official copy, the Land Registry web site explains how to do this.

The Land Registry endeavours to maintain high quality and scale accuracy of title plan images. The quality and accuracy of any print will depend on your printer, your computer and its print settings. This title plan shows the general position, not the exact line, of the boundaries. It may be subject to distortions in scale. Measurements scaled from this plan may not match measurements between the same points on the ground.

This title is dealt with by Land Registry, Durham Office.

© Crown Copyright. Produced by Land Registry. Further reproduction in whole or in part is prohibited without the prior written permission of Ordnance Survey. Licence Number 100026316.



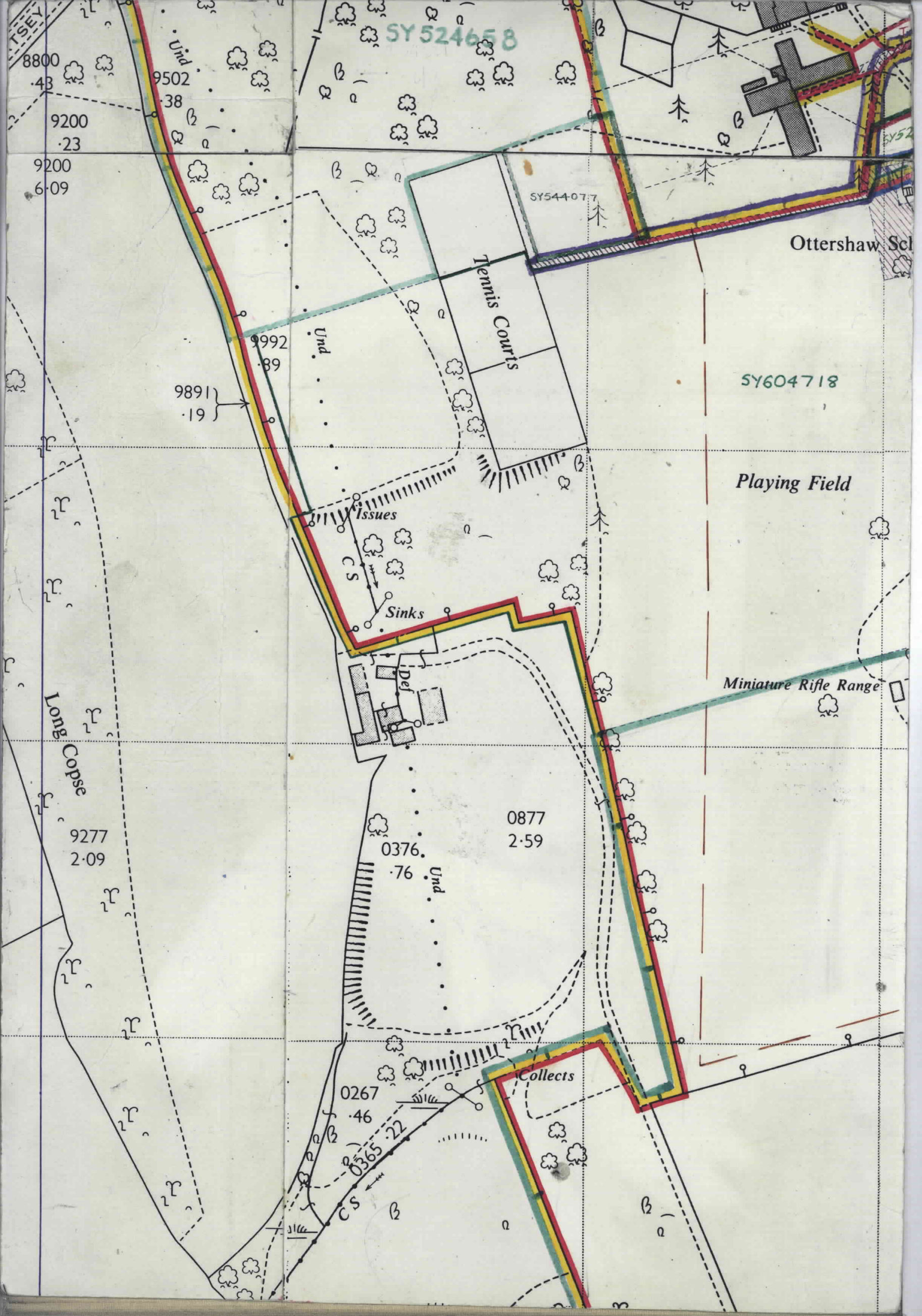
This is a copy of the title plan on 12 FEB 2015 at 19:33:11. This copy does not take account of any application made after that time even if still pending in the Land Registry when this copy was issued.

This copy is not an 'Official Copy' of the title plan. An official copy of the title plan is admissible in evidence in a court to the same extent as the original. A person is entitled to be indemnified by the registrar if he or she suffers loss by reason of a mistake in an official copy. If you want to obtain an official copy, the Land Registry web site explains how to do this.

The Land Registry endeavours to maintain high quality and scale accuracy of title plan images. The quality and accuracy of any print will depend on your printer, your computer and its print settings. This title plan shows the general position, not the exact line, of the boundaries. It may be subject to distortions in scale. Measurements scaled from this plan may not match measurements between the same points on the ground.

This title is dealt with by Land Registry, Durham Office.

© Crown Copyright. Produced by Land Registry. Further reproduction in whole or in part is prohibited without the prior written permission of Ordnance Survey. Licence Number 100026316.



This is a copy of the title plan on 12 FEB 2015 at 19:33:11. This copy does not take account of any application made after that time even if still pending in the Land Registry when this copy was issued.

This copy is not an 'Official Copy' of the title plan. An official copy of the title plan is admissible in evidence in a court to the same extent as the original. A person is entitled to be indemnified by the registrar if he or she suffers loss by reason of a mistake in an official copy. If you want to obtain an official copy, the Land Registry web site explains how to do this.

The Land Registry endeavours to maintain high quality and scale accuracy of title plan images. The quality and accuracy of any print will depend on your printer, your computer and its print settings. This title plan shows the general position, not the exact line, of the boundaries. It may be subject to distortions in scale. Measurements scaled from this plan may not match measurements between the same points on the ground.

This title is dealt with by Land Registry, Durham Office.

© Crown Copyright. Produced by Land Registry. Further reproduction in whole or in part is prohibited without the prior written permission of Ordnance Survey. Licence Number 100026316.



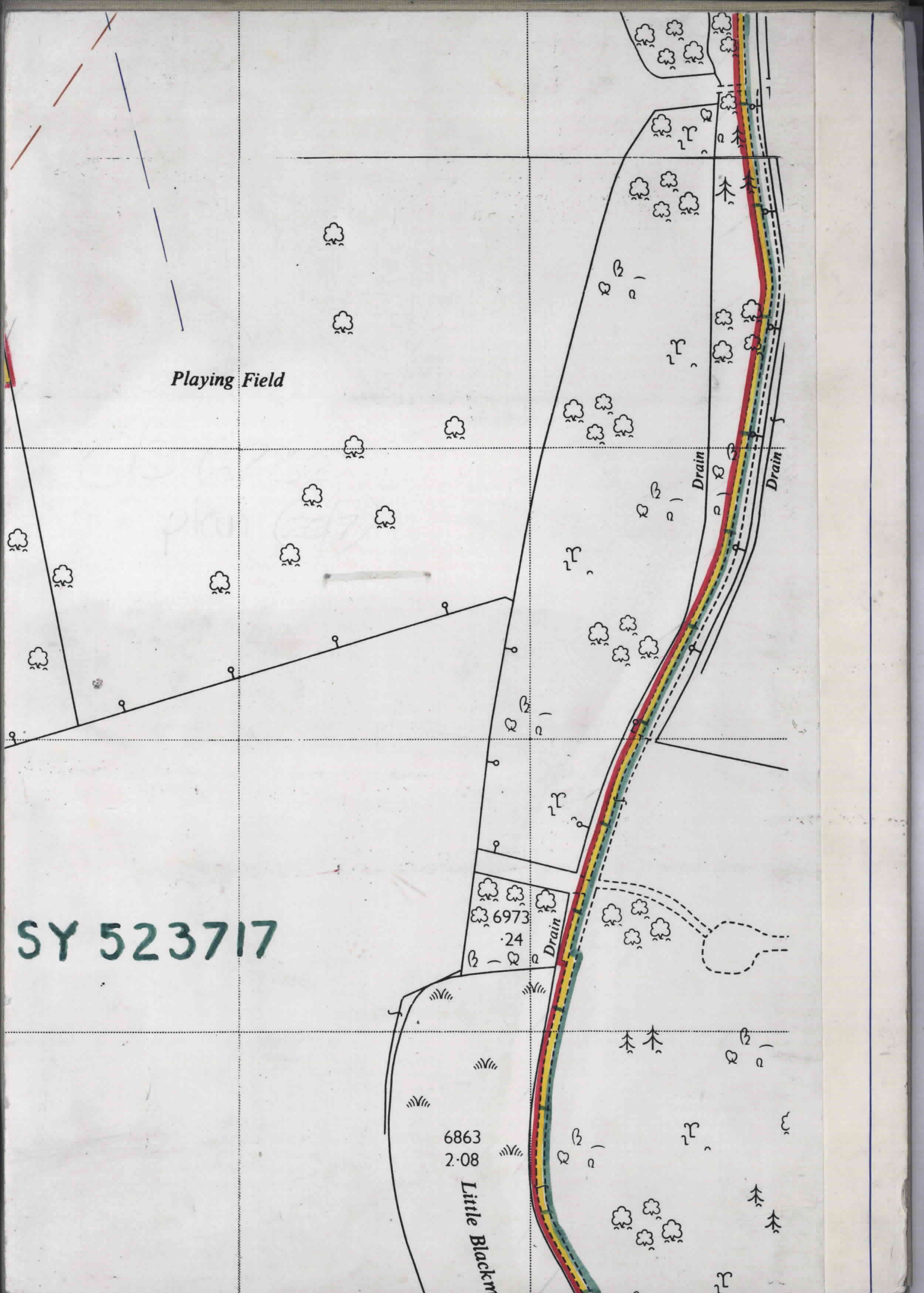
This is a copy of the title plan on 12 FEB 2015 at 19:33:11. This copy does not take account of any application made after that time even if still pending in the Land Registry when this copy was issued.

This copy is not an 'Official Copy' of the title plan. An official copy of the title plan is admissible in evidence in a court to the same extent as the original. A person is entitled to be indemnified by the registrar if he or she suffers loss by reason of a mistake in an official copy. If you want to obtain an official copy, the Land Registry web site explains how to do this.

The Land Registry endeavours to maintain high quality and scale accuracy of title plan images. The quality and accuracy of any print will depend on your printer, your computer and its print settings. This title plan shows the general position, not the exact line, of the boundaries. It may be subject to distortions in scale. Measurements scaled from this plan may not match measurements between the same points on the ground.

This title is dealt with by Land Registry, Durham Office.

© Crown Copyright. Produced by Land Registry. Further reproduction in whole or in part is prohibited without the prior written permission of Ordnance Survey. Licence Number 100026316.



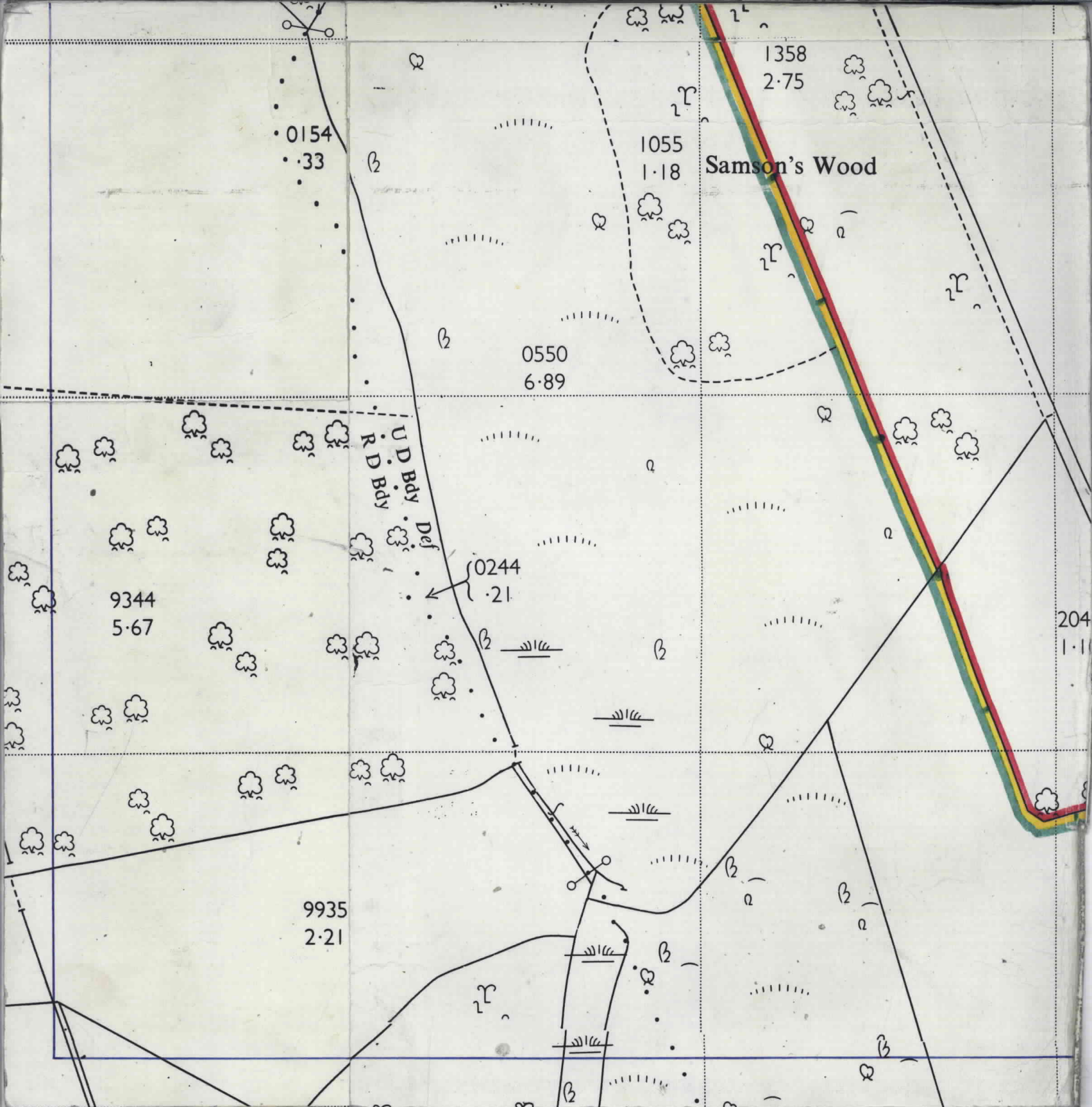
This is a copy of the title plan on 12 FEB 2015 at 19:33:11. This copy does not take account of any application made after that time even if still pending in the Land Registry when this copy was issued.

This copy is not an 'Official Copy' of the title plan. An official copy of the title plan is admissible in evidence in a court to the same extent as the original. A person is entitled to be indemnified by the registrar if he or she suffers loss by reason of a mistake in an official copy. If you want to obtain an official copy, the Land Registry web site explains how to do this.

The Land Registry endeavours to maintain high quality and scale accuracy of title plan images. The quality and accuracy of any print will depend on your printer, your computer and its print settings. This title plan shows the general position, not the exact line, of the boundaries. It may be subject to distortions in scale. Measurements scaled from this plan may not match measurements between the same points on the ground.

This title is dealt with by Land Registry, Durham Office.

© Crown Copyright. Produced by Land Registry. Further reproduction in whole or in part is prohibited without the prior written permission of Ordnance Survey. Licence Number 100026316.



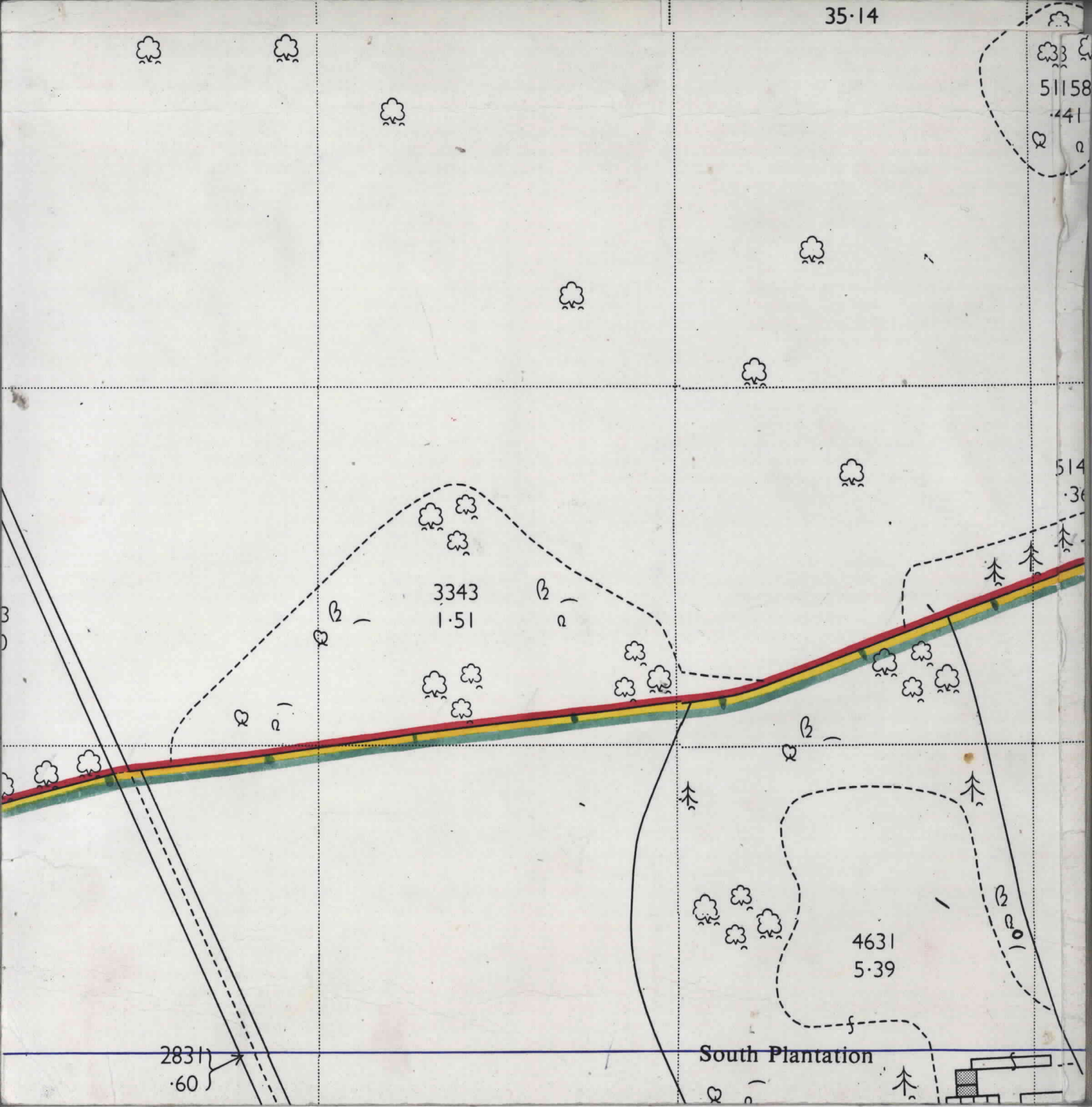
This is a copy of the title plan on 12 FEB 2015 at 19:33:11. This copy does not take account of any application made after that time even if still pending in the Land Registry when this copy was issued.

This copy is not an 'Official Copy' of the title plan. An official copy of the title plan is admissible in evidence in a court to the same extent as the original. A person is entitled to be indemnified by the registrar if he or she suffers loss by reason of a mistake in an official copy. If you want to obtain an official copy, the Land Registry web site explains how to do this.

The Land Registry endeavours to maintain high quality and scale accuracy of title plan images. The quality and accuracy of any print will depend on your printer, your computer and its print settings. This title plan shows the general position, not the exact line, of the boundaries. It may be subject to distortions in scale. Measurements scaled from this plan may not match measurements between the same points on the ground.

This title is dealt with by Land Registry, Durham Office.

© Crown Copyright. Produced by Land Registry. Further reproduction in whole or in part is prohibited without the prior written permission of Ordnance Survey. Licence Number 100026316.



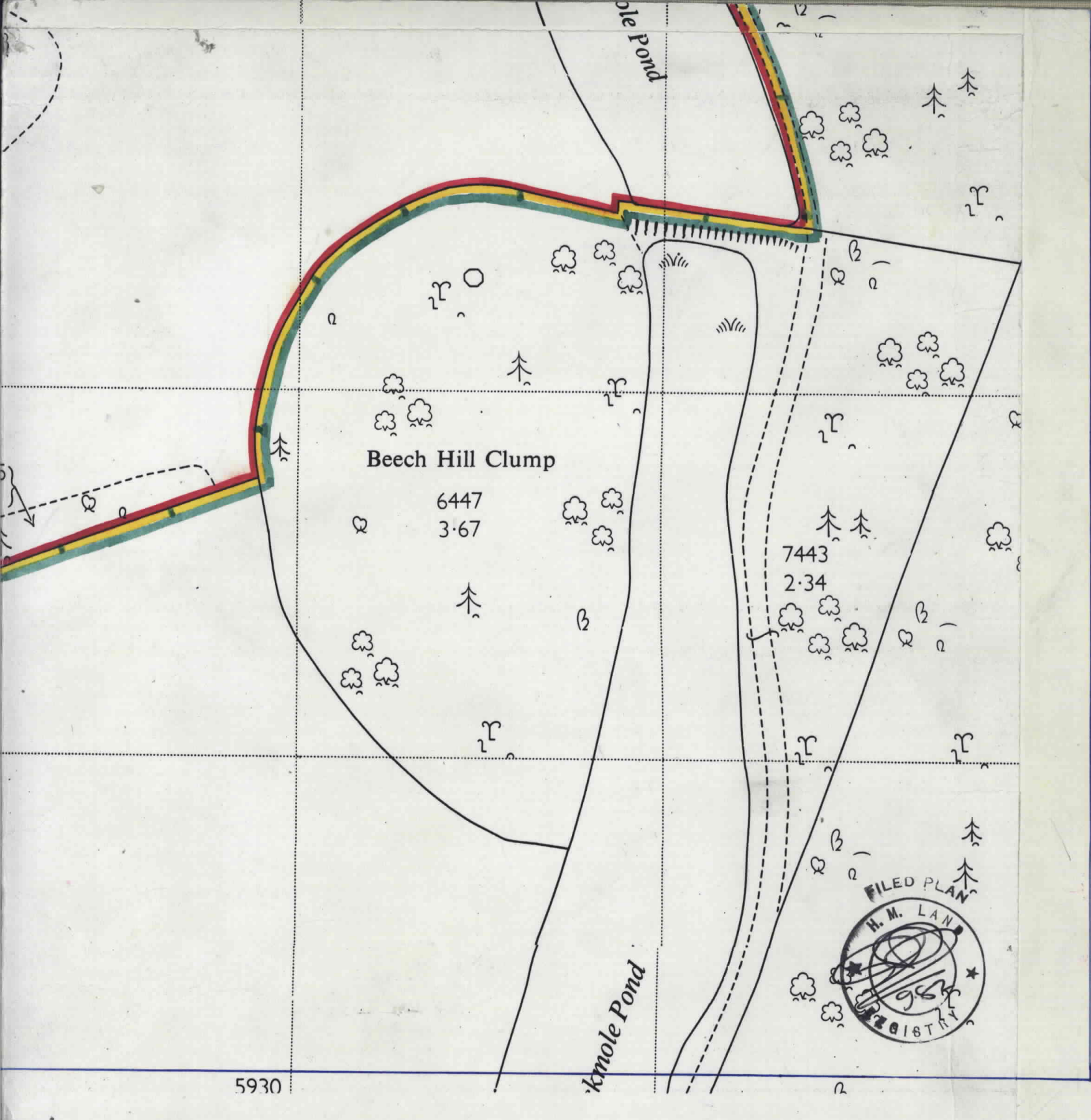
This is a copy of the title plan on 12 FEB 2015 at 19:33:11. This copy does not take account of any application made after that time even if still pending in the Land Registry when this copy was issued.

This copy is not an 'Official Copy' of the title plan. An official copy of the title plan is admissible in evidence in a court to the same extent as the original. A person is entitled to be indemnified by the registrar if he or she suffers loss by reason of a mistake in an official copy. If you want to obtain an official copy, the Land Registry web site explains how to do this.

The Land Registry endeavours to maintain high quality and scale accuracy of title plan images. The quality and accuracy of any print will depend on your printer, your computer and its print settings. This title plan shows the general position, not the exact line, of the boundaries. It may be subject to distortions in scale. Measurements scaled from this plan may not match measurements between the same points on the ground.

This title is dealt with by Land Registry, Durham Office.

© Crown Copyright. Produced by Land Registry. Further reproduction in whole or in part is prohibited without the prior written permission of Ordnance Survey. Licence Number 100026316.



This is a copy of the title plan on 12 FEB 2015 at 19:33:11. This copy does not take account of any application made after that time even if still pending in the Land Registry when this copy was issued.

This copy is not an 'Official Copy' of the title plan. An official copy of the title plan is admissible in evidence in a court to the same extent as the original. A person is entitled to be indemnified by the registrar if he or she suffers loss by reason of a mistake in an official copy. If you want to obtain an official copy, the Land Registry web site explains how to do this.

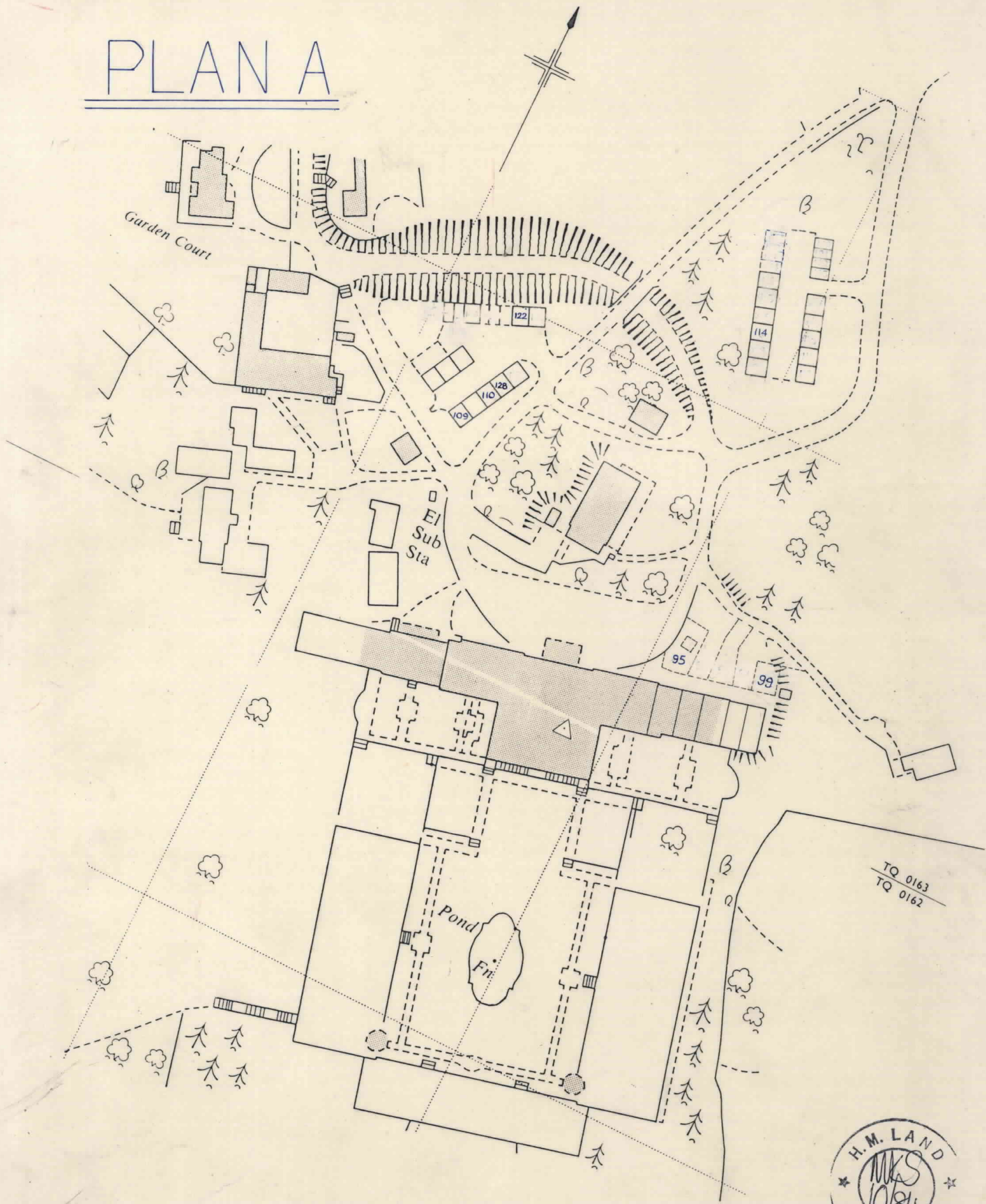
The Land Registry endeavours to maintain high quality and scale accuracy of title plan images. The quality and accuracy of any print will depend on your printer, your computer and its print settings. This title plan shows the general position, not the exact line, of the boundaries. It may be subject to distortions in scale. Measurements scaled from this plan may not match measurements between the same points on the ground.

This title is dealt with by Land Registry, Durham Office.

© Crown Copyright. Produced by Land Registry. Further reproduction in whole or in part is prohibited without the prior written permission of Ordnance Survey. Licence Number 100026316.

H.M. LAND REGISTRY		TITLE NUMBER	
		SY 498578	
ORDNANCE SURVEY PLAN REFERENCE	TQ 0162	SECTION B	Scale 1/1250 Enlarged from 1/2500
COUNTY SURREY	DISTRICT RUNNYMEDE		© Crown copyright 1984

PLAN A



This is a copy of the title plan on 12 FEB 2015 at 19:33:11. This copy does not take account of any application made after that time even if still pending in the Land Registry when this copy was issued.

This copy is not an 'Official Copy' of the title plan. An official copy of the title plan is admissible in evidence in a court to the same extent as the original. A person is entitled to be indemnified by the registrar if he or she suffers loss by reason of a mistake in an official copy. If you want to obtain an official copy, the Land Registry web site explains how to do this.

The Land Registry endeavours to maintain high quality and scale accuracy of title plan images. The quality and accuracy of any print will depend on your printer, your computer and its print settings. This title plan shows the general position, not the exact line, of the boundaries. It may be subject to distortions in scale. Measurements scaled from this plan may not match measurements between the same points on the ground.

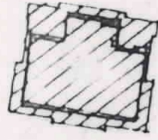
This title is dealt with by Land Registry, Durham Office.

© Crown Copyright. Produced by Land Registry. Further reproduction in whole or in part is prohibited without the prior written permission of Ordnance Survey. Licence Number 100026316.

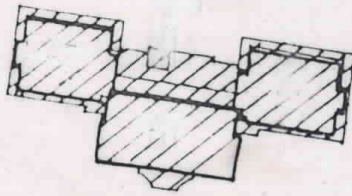
H. M. LAND REGISTRY

SUPPLEMENTARY PLAN TO FILED PLAN OF TITLE NO **SY498578**

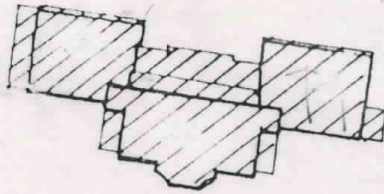
Scale 1/1250



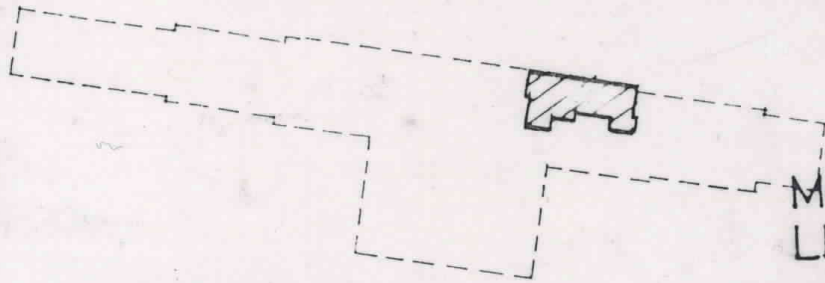
Penthouse
LEVEL 7



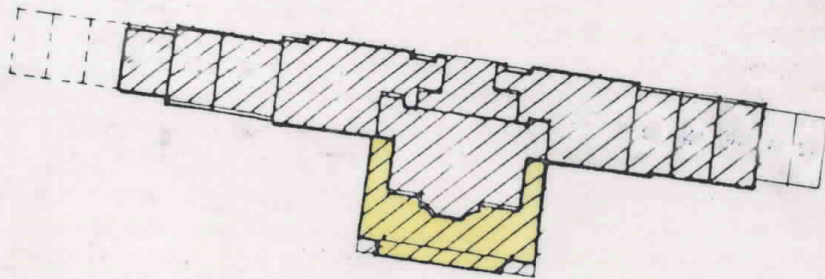
2nd Floor
LEVEL 6



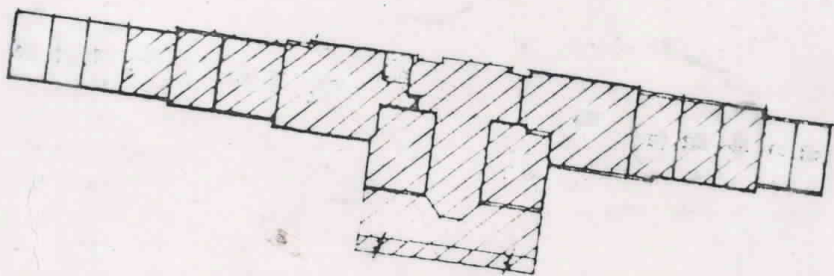
1st Floor
LEVEL 5



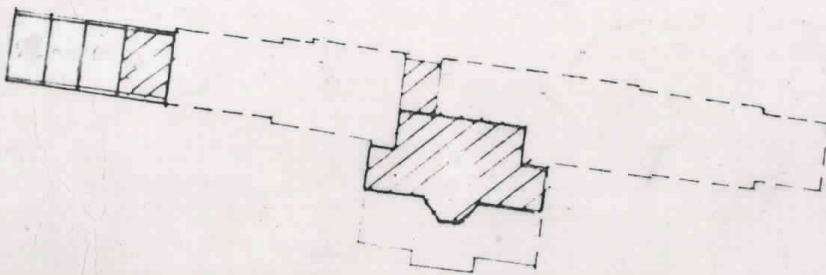
Mezzanine
LEVEL 4



Terrace
LEVEL 3



Ground Floor
LEVEL 2



Lower Ground
Floor
LEVEL 1



This is a copy of the title plan on 12 FEB 2015 at 19:33:11. This copy does not take account of any application made after that time even if still pending in the Land Registry when this copy was issued.

This copy is not an 'Official Copy' of the title plan. An official copy of the title plan is admissible in evidence in a court to the same extent as the original. A person is entitled to be indemnified by the registrar if he or she suffers loss by reason of a mistake in an official copy. If you want to obtain an official copy, the Land Registry web site explains how to do this.

The Land Registry endeavours to maintain high quality and scale accuracy of title plan images. The quality and accuracy of any print will depend on your printer, your computer and its print settings. This title plan shows the general position, not the exact line, of the boundaries. It may be subject to distortions in scale. Measurements scaled from this plan may not match measurements between the same points on the ground.

This title is dealt with by Land Registry, Durham Office.

© Crown Copyright. Produced by Land Registry. Further reproduction in whole or in part is prohibited without the prior written permission of Ordnance Survey. Licence Number 100026316.